

# Exhibit J - Osceola Trak Design Concept

## LEGEND

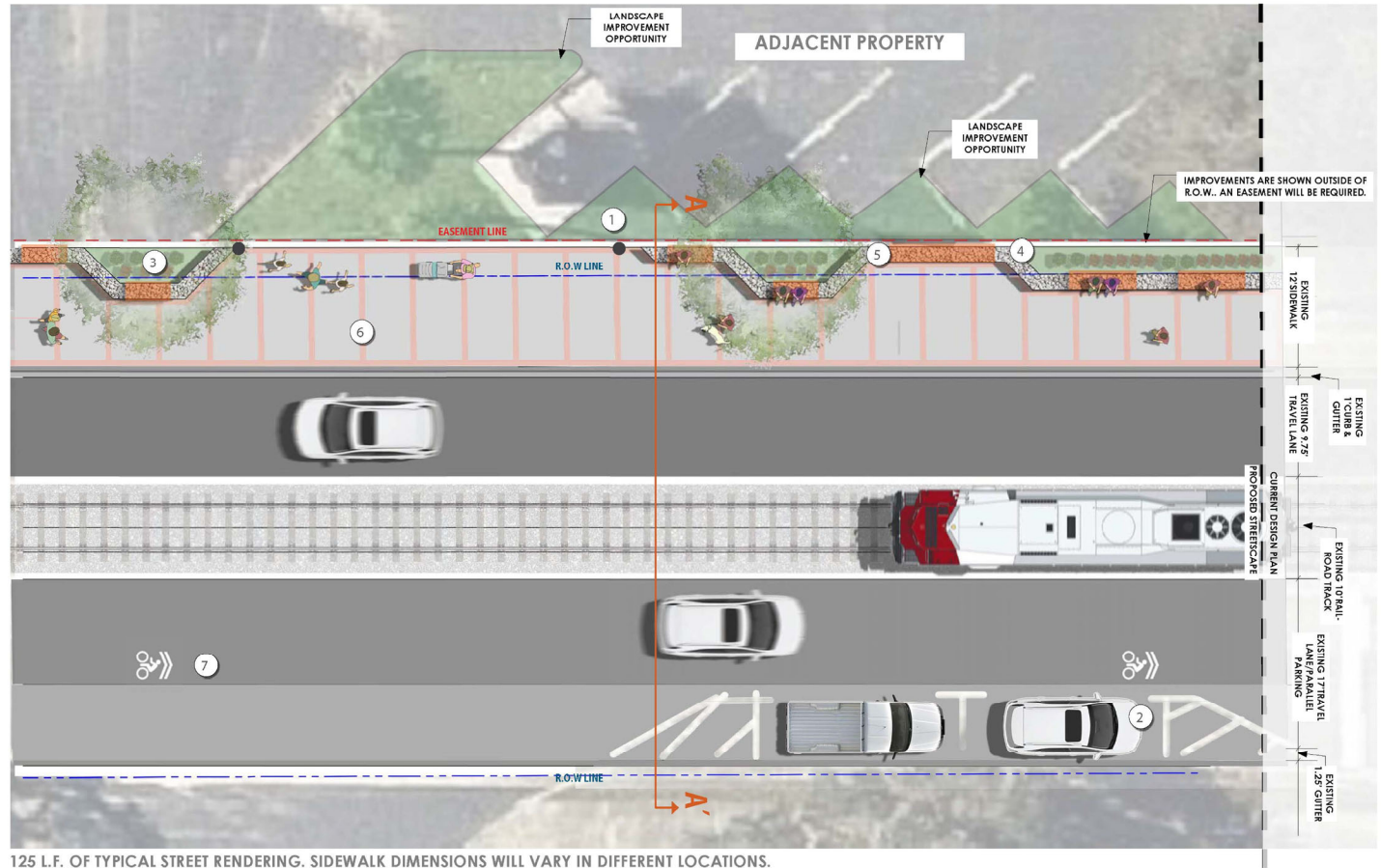
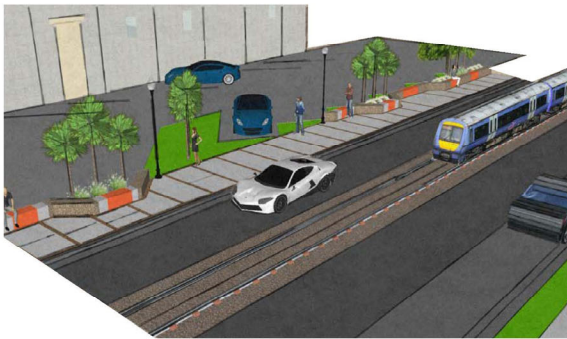
SEE PAGE 7 FOR IMAGES



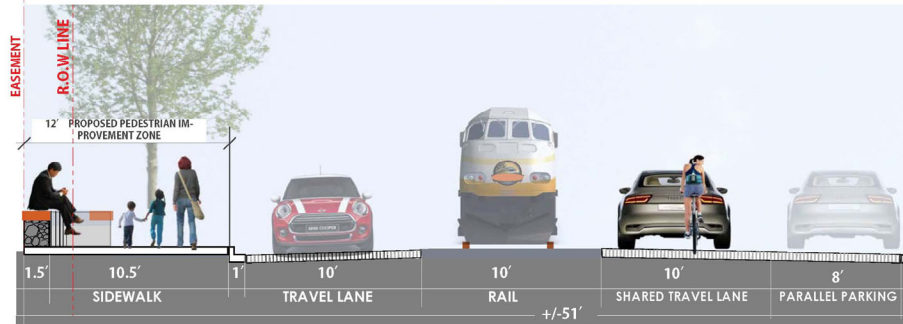
- ① LIGHTING IMPROVEMENT
- ② EXISTING PARALLEL PARKING
- ③ SEATING AND LANDSCAPE COMBINATION
- ④ SEATING WALL OPTION
- ⑤ GABION SEATING WALL (CAN BE COMBINED WITH CONCRETE WALL)
- ⑥ BRICK AND CONCRETE COMBINATION SIDEWALK
- ⑦ BIKE SHARE LANE

## PROJECT PRIORITIES

- PROVIDE A MULTI-MODAL PATHWAY LINKING THE COMMUNITY TO SITE
- ENHANCE PEDESTRIAN EXPERIENCE
- INCORPORATE LANDSCAPE AND HARDSCAPE ENHANCEMENTS
- INTEGRATE CORRIDOR IMPROVEMENTS WITH ADJACENT PROPERTIES
- PROVIDE WAY FINDING SIGNAGE AND LIGHTING ENHANCEMENTS
- INCREASE WALK-ABILITY OF THE CORRIDOR
- PROVIDE SHARED TRAVEL LANE WITH BICYCLES
- CONNECT TRAK TO ART PARK AND TUSCAWILLA PARK



125 L.F. OF TYPICAL STREET RENDERING. SIDEWALK DIMENSIONS WILL VARY IN DIFFERENT LOCATIONS.



SECTION A-A'



VICINITY MAP



## Exhibit J - Osceola Trak Design Concept



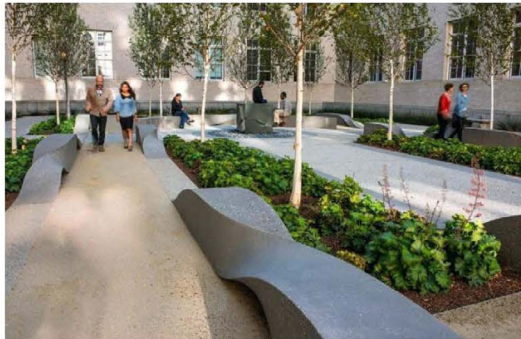
LIGHTING IMPROVEMENT



GATEWAY OPPORTUNITY AT CATALYST SITES



SEATING AND LANDSCAPE COMBINATION



SEATING WALL OPTION



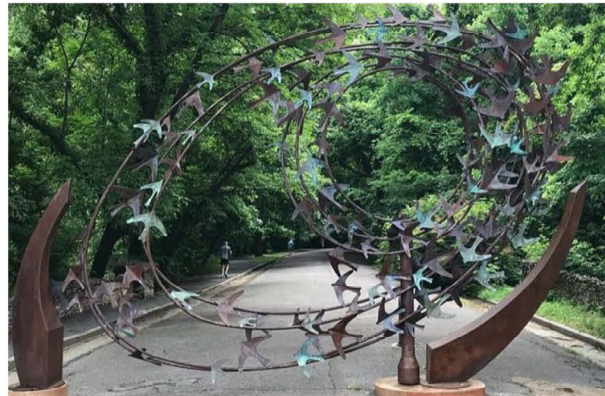
GABION SEATING WALL (CAN BE COMBINED WITH CONCRETE WALL)



BRICK AND CONCRETE COMBINATION SIDEWALK



GATEWAY ENTRANCE FEATURE OPTION



GATEWAY ENTRANCE FEATURE OPTION



GATEWAY ENTRANCE FEATURE OPTION



# Exhibit J - Osceola Trak Design Concept

